

DOOSAN **CARE**



RELIABLE



CARING



COLLABORATIVE



SUSTAINABLE



DoosanCARE is a unique & direct customer care program that offers “Total Solutions” that are essential to customers’ business development, leading to long-lasting partnership and shared growth.

DOOSAN CARE

A Proactive Customer Care Solution, DoosanCARE

Taking a proactive approach to customer care, DoosanCARE focuses greatly on every customer to listen closely to your voices and to offer a customized Total Solution for greater success and a long-term growth in your business.

Reliable

DoosanCARE focuses on listening closely to customers to provide a solution specifically tailored to your needs. This will allow us to present reliable solutions that are above and beyond customer expectations and to deliver services customized to meet your requirements.

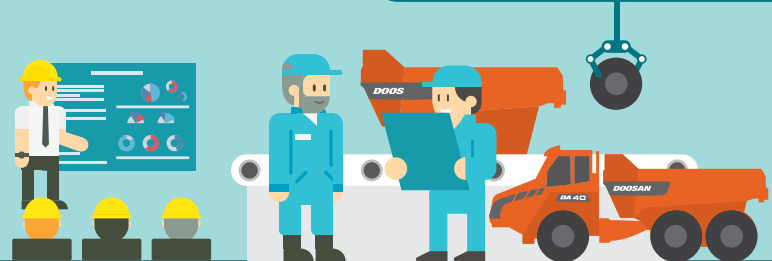


Caring

DoosanCARE is not about simply providing after services as usual. It goes further to quickly sense and address any inconvenience or discomfort customers might have experienced with Doosan products through all available resources Doosan has, thereby enhancing the overall operational efficiency.

Collaborative

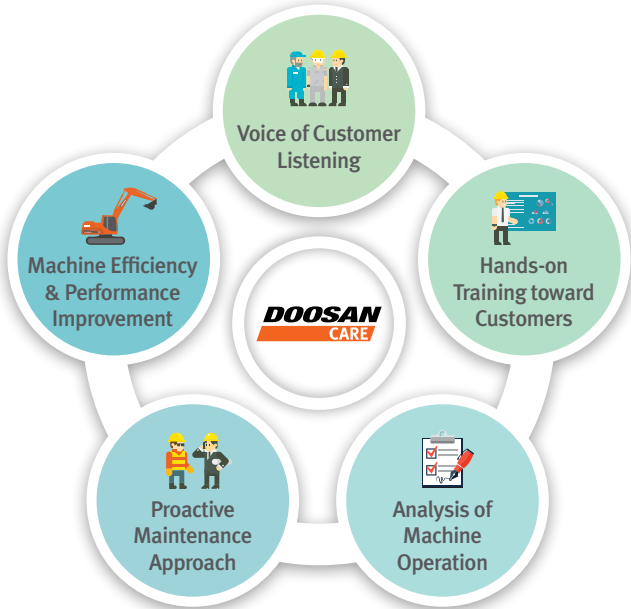
DoosanCARE is collaborative services offered by various functions of Doosan ranging from Sales, Quality Management and Product Planning to R&D, thereby enabling us to give customers comprehensive solutions that surpass your expectations.



Sustainable

We increase customer satisfaction, continue to find out what our new customers need and deepen our understanding in diverse markets through DoosanCARE, which will enable us to consistently develop new products and further improve services. DoosanCARE is a sustainable way of realizing customers' desire to achieve shared growth and build long-lasting partnership.

DoosanCARE ACTIVITIES



CUSTOMER BENEFITS FROM DoosanCARE



Doosan Infracore

www.doosanconnect.com
www.doosaninfracore.com/ce

